

# Act Fast NL Year 11 KS4 Careers

## Autumn 01

### Work & Life Balance

Balancing work life and personal wellbeing

### Explore Possibilities

Developing academic learning plans

### GATSBY Benchmarks

3. Addressing the needs of each student
4. Linking curriculum learning to careers
7. Encounters with further and higher education
8. Personal guidance

## Spring 01

### Create Opportunities

Individualised work experiences virtual

Individualised work experiences visits

### GATSBY Benchmarks

3. Addressing the needs of each student
5. Encounters with employers & employees
6. Experiences of workplaces
8. Personal guidance

## Summer 01

### Create Opportunities

Creating relationships with internal and external visits

### Growth Throughout Life

Discovering the importance and benefits of volunteering

### GATSBY Benchmarks

2. Learning from career and Labour Market information
3. Addressing the needs of each student
5. Encounters with employers & employees
8. Personal guidance



## Autumn 02

### Manage Career

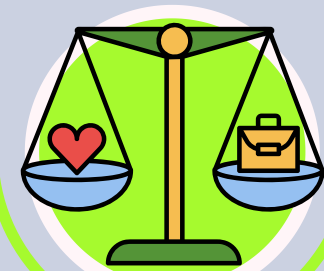
Reviewing and perfecting applications

### Growth Throughout Life

Preparation, practice, perfect and reflect

### GATSBY Benchmarks

2. Addressing the needs of each pupil
4. Linking curriculum
6. Experiences of workplaces
8. Personal guidance



## Spring 02

### Explore Possibilities

Core subject readiness

Further Education planning

### GATSBY Benchmarks

3. Addressing the needs of each student
5. Encounters with employers & employees
6. Experiences of workplaces
8. Personal guidance



## Summer 02

### Manage Career

Creating opportunities with employers

### See The Big Picture

Reflection of Programme

### GATSBY Benchmarks

3. Addressing the needs of each student
5. Encounters with employers & employees
6. Experiences of workplaces
8. Personal guidance

